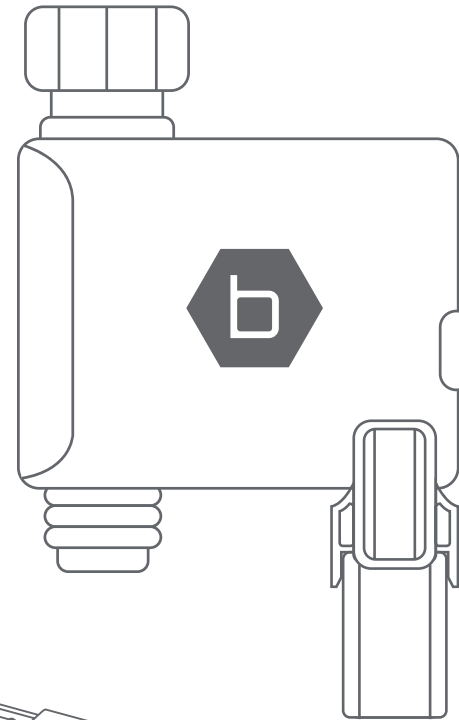
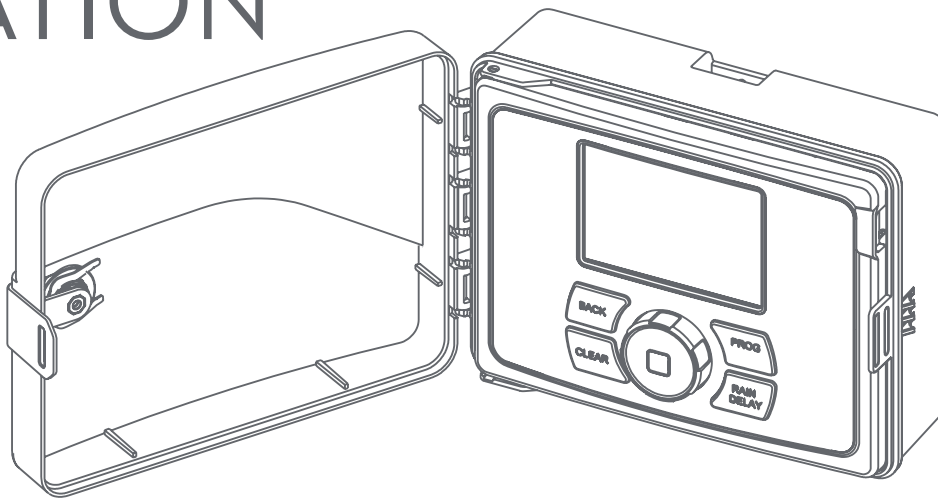


Orbit®

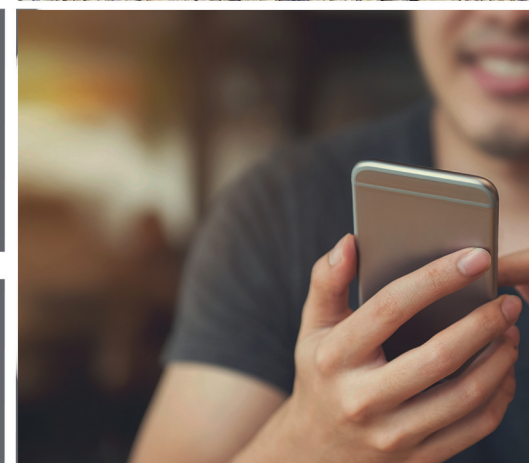
b•hyve®

SMART
IRRIGATION



Scan me to watch -
How Bhyve Works

www.hrproducts.com.au



What makes **b•hyve**® Smart?

WeatherSense®Technology

Smart WeatherSense®Technology receives your local weather data based on your location and automatically adjusts your controller to deliver the perfect watering schedule. WeatherSense® technology provides watering based on site conditions such as slope, soil type, sun/shade, historical ET and live weather feeds.

Rain Delay

Rain Delay is a smart feature in the B-hyve® app that alerts your device to local weather forecasts. If it is predicted to rain, it will automatically delay your timer 24 or 48 hours. This feature conserves water and saves you money.

Total Control

By using the B-hyve® app, you set up your device to water how much and how often you want. Set up a basic schedule or use the WeatherSense® feature for perfect watering. When connected to Wi-Fi, you can control your system from anywhere.

Conservation Through Innovation

B-hyve®, using all of the smart features listed, conserves your water use. Not only does it save you money, it also saves the amount of water used. In 2019, B-hyve® helped save over 1,000,000,000 litres of water through our Conservation Through Innovation® program.

Know the Flow

The built in flow meter (Tap Timer only) lets you know how much water it takes to water your plants, wash your car, or fill your pool. Knowing the flow also lets your water by volume, allowing you to conserve water and save money.



Easy set up...

...No more watering in the rain...



...Efficient watering...

...All from your phone!



www.hrproducts.com.au





Bluetooth Tap Timer
96505



Wi-Fi Tap Timer + Hub
96504



Indoor Timer
96915



Indoor/Outdoor
Controller
96046



Indoor/Outdoor
Controller
96050

APPLICATION

Residential	●	●
Light Commercial	●	●
Hose End	●	●

TYPE OF CONTROLLER

Smart	●	●
Hybrid		
Battery Operated	●	●

FEATURES

Stations	1	1
Programs	4	4
Run Times/Minutes	1-240	1-240
Cycle Start Time/Program	4	4
Amazon Alexa+Google Assistant (English Only)	●	●
Master Valve/Pump Station		
Low Battery Indicator	●	●
Concurrent Programs	●	●
Circuit Breaker		
Water Budgeting	●	●
24 VAC Out		
1 Amp Transformer		
WaterSense Certified	●	●
Wi-Fi Enabled		●
Bluetooth® Ready	●	●
Mobile App	●	●
Multi-Site Management (with B-hyve Pro App)		●

ENCLOSURE

Indoor		
Outdoor	●	●
ABS-With Lock		
Weatherproof Controller Mount		
IP 34 Rating	●	●

PROGRAMMING

7 Days of the Week	●	●
Odd/Even Cycle	●	●
1-31 Variable Cycle	●	●
Rain Delay	●	●
365 Calendar	●	●
Event Day Off	●	●
Smart Watering Mode	●	●
Manual Mode	●	●

HARDWARE/ACCESSORIES

Rain/Freeze Sensor Ready		
--------------------------	--	--

●	●	●
●	●	●

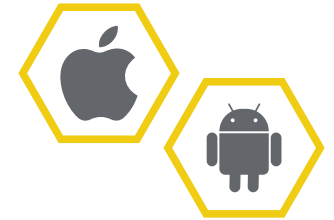
●	●	●
	●	●

4	6	12
4	4	4
1-240	1-240	1-240
4	4	4
●	●	●
●	●	●
●	●	●
●	●	●
●	●	●
●	●	●
●	●	●
●	●	●
●	●	●
●	●	●

●	●	●
	●	●
	●	●
	●	●

●	●	●
●	●	●
●	●	●
●	●	●
●	●	●
●	●	●
●	●	●
●	●	●

●	●	●
---	---	---



The B-hyve® app gives you full control where you need it. Program your timer in the app or let the WeatherSense® function create a custom program for you.



Available on the
App Store



GET IT ON
Google Play



b•hyve®

B-HYVE® BLUETOOTH® HOSE TAP TIMER

Features

- Program with smart device
- Programmable over Bluetooth
- Bluetooth Range: 45 metres without interference
- Pressure Operating Range: 69kPa to 700kPa
- Up to 4 start times per day
- IP34 Rating (with battery drawer secure)
- Brass hose swivel
- Requires 2 x AA Alkaline Batteries

What You'll Need to Get Started



Tap



2 AA Batteries



Bluetooth and
Internet Connection

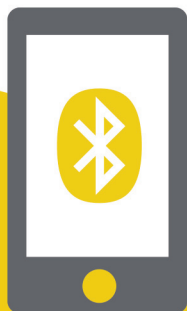


A Smartphone or
Device



The app works with iOS
and Android

Scan me to watch -
How to Pair the B-hyve
Tap Timer with BT



Easy Wi-Fi Upgrade

Add a B-hyve Hub to enable Wi-Fi features, giving you complete control of your watering from anywhere. Hub sold separately.



www.hrproducts.com.au



B-HYVE® SMART WI-FI HOSE TAP TIMER WITH HUB

Features

- Program with smart device
- Wi-Fi and Bluetooth enabled
- Bluetooth Range: 45 metres without interference
- Wi-Fi Range: Up to 70 metres without interference
- Pressure Operating Range: 69kPa to 700kPa
- Up to 4 start times per day
- IP34 Rating (with battery drawer secure)
- Brass hose swivel
- Requires 2 x AA Alkaline Batteries

What You'll Need to Get Started



Tap



2 AA Batteries



A Plug for the Hub



Wi-Fi and Internet
Connection



A Smartphone or
Device



The app works with iOS
and Android



Scan me to watch -
How to Pair the B-hyve
Tap Timer with Wi-Fi

b•hyve®



WELCOME TO **b•hyve**[®]

QUICK START GUIDE



1) Open the B-hyve App

Log into your B-hyve account and go to devices under settings to add the Hose Tap Timer as a new device. The app will walk you through the rest of the process.



For new users, search for “B-hyve” and download the free Android or iOS app. Create an account to begin timer setup.

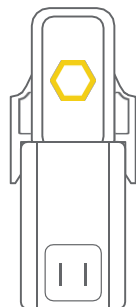


2) Power Your Wi-Fi Hub

Write down the MAC address:

12-digit alphanumeric code on the back of the hub.

Hub MAC Address: ____:____:____:____:____:____



Plug the hub into an indoor outlet within range of your B-hyve device and Wi-Fi signal.

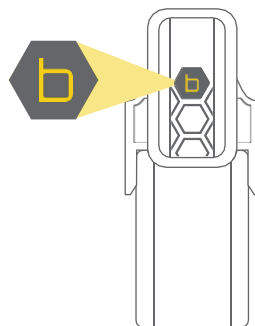


Avoid areas where the signal must travel through dirt or thick steel barriers.



3) Enter Pairing Mode

Press the B-hyve button 5 times (approximately 1 per second) to enter into pairing mode. Your hub will flash a blue light every 5 seconds.



4) Power Your Hose Tap Timer

Insert two new AA Batteries*, the timer is now in pairing mode and will flash a blue light every 5 seconds.

You will also hear two clicks about 6 seconds apart, this is normal and ensures the valve is closed before you turn on the water.

Write down the MAC address: 12 digit alphanumeric code on the bottom of the timer.

Timer MAC Address: ____:____:____:____:____:____



If at any time you need to re-pair or do a factory reset, press the on/off button 5 times (approximately 1 per second).

*Batteries are sold separately. Replace batteries when timer flashes a red light every 5 seconds, or when the app notifies you that batteries need replacing.

⚠ If you remove or change the batteries you will need to reconnect to Bluetooth® to set the correct time and date.



5) Install the Timer

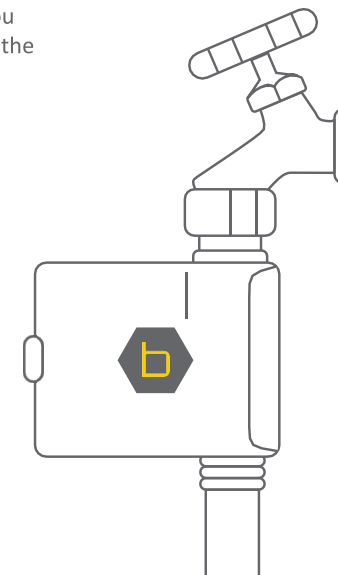
Your timer is now ready to be used with any product that can be attached to a standard hose tap.



Do not place the timer in an underground valve box.

6) Turn on Your Water

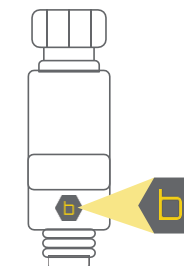
The water must remain on for the timer to work properly.



Manual Watering

Simply press and hold the on/off button for 5 seconds to activate manual watering.

Need to stop watering, even during a programmed time? Press the on/off button once to stop watering.



b•hyve®

B-HYVE® INDOOR/OUTDOOR SMART SPRINKLER CONTROLLER



Features

- Program with smart device
- Wi-Fi and Bluetooth enabled
- Bluetooth Range: 45 metres without interference
- Wi-Fi Range: Up to 70 metres without interference
- 6 Station and 12 station available
- 4 programs
- Up to 4 start times per day
- 1 -240 minute run time per station
- Must be connected to home network for Smart Watering

What You'll Need to Get Started



AC outlet



Wi-Fi and Internet
Connection



A Smartphone or
Device



The app works with iOS
and Android



Scan me to watch -
How to Pair the B-hyve
Indoor Outdoor Timer



www.hrproducts.com.au