



PRODUCT SPECIFICATION

VALVES

FIMCO - HYDRO INDEXING VALVE

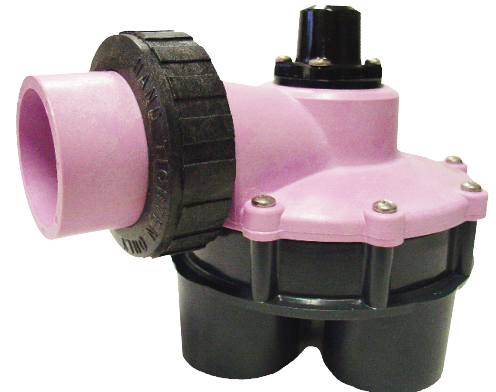
A reliable, economical way to automate multiple zoned residential and commercial irrigation systems. No electric wiring is required to the valve.

FEATURES

- PVC body with Fiberfill bonnet (reclaimed water identification)
- Pre-assembled with sequencing cam depending on zone requirement
- Easily replaced cam through top of valve
- Union connection between inlet supply and valve
- No electric wiring required at valve
- Zone cams can be fitted to allow complete flexibility over watering system

SPECIFICATIONS

- For flow rates under 37lpm use low flow stem & disc assemblies (see models chart)
- Minimum flow using low flow stem & disc - 23lpm
- Flow range model F1004 - 37lpm to 90lpm
- Flow range model F1006 - 37lpm to 90lpm
- Flow range all models F600F - 132lpm to 283lpm
- Pressure loss through all models - 14kPa to 28kPa
- Minimum operating pressure - 100kPa
- Maximum operating pressure - 551kPa
- Inlet & outlet ports are slip requiring use of solvent cement



OPERATION

The hydro indexing valve is activated by insufficient water supply being turned on and off. No electric wiring is required to the valve. Each time the water supply is turned on a zone will water. Each time the water supply is turned off the valve is indexed to the next zone ready for next on signal. To automate the indexing valve, the use of a pump or master solenoid valve with controller is required, each time the pump or master valve is activated a zone will water. The number of zones will determine your type of controller ie: if you have a six zone indexing valve you will require a controller that allows 6 cycle starts.

MODEL	CODE
4 port outlet x 25mm slip port	F1004
6 port outlet x 25mm outlet slip port	F1006
2 port outlet x 40mm slip port	F6002F
3 port outlet x 40mm slip port	F6003F
4 port outlet x 40mm slip port	F6004F
6 port outlet x 40mm slip port	F6006F
2 port cam	ICZ2
3 port cam	ICZ3
4 port cam	ICZ4
5 port cam	ICZ5
6 port cam	ICZ6
Low flow stem & disc for F1004 / F1006 models	VSDA25LF
Low flow stem & disc for 6000 series models	VSDALGLF

Specifications subject to change without notice - Product Drawings / Images are representative only and are subject to change

VALVES_FIMCO_V1.10-20

www.hrproducts.com.au



PERTH

PH: 08 9484 6500

FAX: 08 9455 1680

hrsales@hrproducts.com.au

SYDNEY

PH: 02 9616 1300

FAX: 02 9725 5283

infonsw@hrproducts.com.au

MELBOURNE

PH: 03 8458 7400

FAX: 03 9457 7400

infovic@hrproducts.com.au

BRISBANE

PH: 07 3080 6200

FAX: 07 3806 0533

infoqld@hrproducts.com.au

ADELAIDE

PH: 08 8408 7200

FAX: 08 8341 0707

infosa@hrproducts.com.au