

# PRODUCT SPECIFICATION

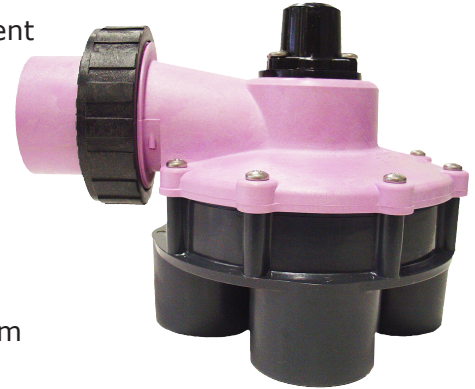


## FIMCO - HYDRO INDEXING VALVES

A reliable, economical way to automate multiple zoned residential and commercial irrigation system. No electric wiring is required to the valve

### FEATURES

- PVC body with Fiberfill bonnet (reclaimed water identification)
- Pre-assembled with sequencing cam depending on zone requirement
- Easily replaced cam through top of valve
- Union connection between inlet supply and valve
- No electric wiring required at valve
- Zone cams can be fitted to allow complete flexibility over watering system



### SPECIFICATIONS

- For flow rates under 37 lpm use low flow stem & disk assemblies (see Models chart) Minimum flow using low flow stem & disc 23 lpm
- Flow range model F1004 - 37 lpm to 90 lpm
- Flow range model F1006 - 37 lpm to 90 lpm
- Flow range all models F600F - 132 lpm to 283 lpm
- Pressure loss through all models 14 kpa to 28 kpa
- Minimum operating pressure 100 kpa
- Maximum operating pressure 551 kpa
- Inlet & outlet ports are slip requiring use of solvent cement

### OPERATION

The hydro indexing valve is activated by sufficient water supply being turned on and off. No electric wiring is required to the valve. Each time the water supply is turned on a zone will water. Each time the water supply is turned off the valve is indexed to next zone ready for next on signal. To automate the indexing valve the use of pump or master solenoid valve with controller is required, each time the pump or master valve is activated a zone will water. The number of zones will determine your type of controller ie: if you have a six zone indexing valve you will require a controller that allows 6 cycle starts.

MODELS	CODE
4 port outlet x 25mm slip port	F1004
6 port outlet x 32mm inlet / 25mm outlet slip port	F1006
2 port outlet x 40mm slip port	F6002F
3 port outlet x 40mm slip port	F6003F
4 port outlet x 40mm slip port	F6004F
6 port outlet x 40mm slip port	F6006F
2 port cam	IC22
3 port cam	IC23
4 port cam	IC24
5 port cam	IC25
6 port cam	IC26
Low flow stem & disc for F1004 / F1006 models	VSDA25LF
Low flow stem & disc for F600F models	VSDALGLF



Specifications Subject to Change Without Notice - Product Drawings / Images are representative only and are subject to change

#### PERTH

PH: 08 9455 1677  
FAX: 08 9455 1680  
hrsales@hrproducts.com.au

#### SYDNEY

PH: 02 9725 5733  
FAX: 02 725 5283  
infonsw@hrproducts.com.au

#### MELBOURNE

PH: 03 9457 7500  
FAX: 03 9457 7400  
infovic@hrproducts.com.au

#### BRISBANE

PH: 07 3806 0522  
FAX: 07 3806 0533  
infoqld@hrproducts.com.au

#### ADELAIDE

PH: 08 8341 0008  
FAX: 08 8341 0707  
infosasa@hrproducts.com.au