



# PRODUCT SPECIFICATION

## SENSORS

### TANK LEVEL GAUGE

This mechanical flow operated water level gauge is suitable for installation on potable and rainwater tanks. The gauge has a reversible face plate. One side can be used for tanks to 1.5m in height, the other side is for tanks up to 2.5m in height. The gauge will give an accurate reading of the current water level in the tank.

#### FEATURES

- Suitable up to 2.5 metres deep
- Easy mounting on top of tank using optional back nut
- No batteries or wiring is required
- Easy to read 90mm dial face
- Dial face registers zero when tank is empty
- Dial face registers 150cm or 250cm (depending on set scale and tank height) when tank is full
- Reversible dial face to suit 250cm deep tanks
- Weighted float to ensure correct depth reading

#### SPECIFICATIONS

- 40mm BSP male thread
- Interchangeable scale 0-150cm & 0-250cm

#### HOW TO INSTALL

Depending on the height of the water tank, select the dial that will give you the best accuracy. Drill a 40mm hole into the tank and drop the float through it. Screw down the optional back nut using two self tapping stainless steel screws. Adjust the dial by rotating it clock or anti-clockwise so that the maximum water depth is aligned with the red line on the dial face plate.

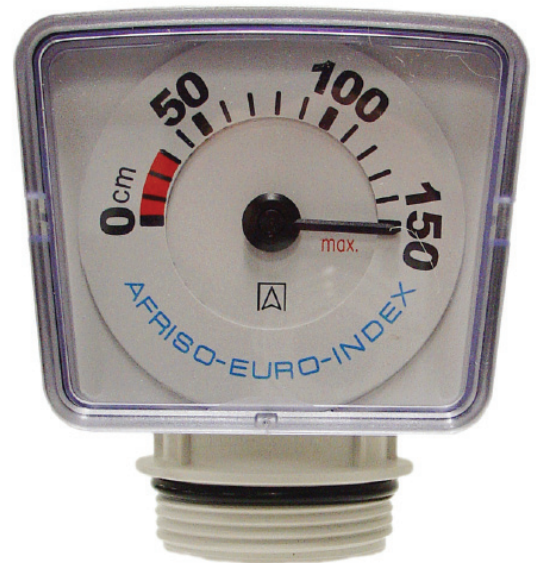
#### CHANGING SCALE

Tank gauge is supplied set to 150cm scale. To set gauge at 250cm flip face plate off being careful not to damage the O-ring seal, slide scale right and lift over needle. Turn the gauge over and slide back into place, making sure the face is lined up with the correct float indication height.

#### SETTING FULL POINT

The tank FULL watermark is indicated when the black needle is aligned with the red indication line. This indication means the float is positioned directly under the gauge and the tank is at full capacity. When first installed this set point will change due to the thickness of the tank material, gently rotate the black needle to align with the red indicator mark to reset this point. Failing to reset this indication mark will result in overfilling the tank.

**Note:** There is a spring loaded mechanism in the gauge that retracts the cord. If the float is disconnected, and the cord is allowed to slip into the gauge then the spring will unload and the gauge will stop working. This will void the warranty.



MODELS	CODE
Tank Level Gauge	MT-PROFIL

*Note: Specifications subject to change without notice - Product drawings / Images are representative only and are subject to change*

SENSORS\_MT-PROFIL\_V1.06-20

[www.hrproducts.com.au](http://www.hrproducts.com.au)



<b>PERTH</b> PH: 08 9484 6500 FAX: 08 9455 1680 hrsales@hrproducts.com.au	<b>SYDNEY</b> PH: 02 9616 1300 FAX: 02 9725 5283 infonsw@hrproducts.com.au	<b>MELBOURNE</b> PH: 03 8458 7400 FAX: 03 9457 7400 infovic@hrproducts.com.au	<b>BRISBANE</b> PH: 07 3080 6200 FAX: 07 3806 0533 infoqld@hrproducts.com.au	<b>ADELAIDE</b> PH: 08 8408 7200 FAX: 08 8341 0707 infosaa@hrproducts.com.au
--	---	--	---	---